

ZOOMLION TELESCOPIC BOOM LIFTS

ZT20J

Comply with CE/ANSI/CSA Standard



FEATURES

Standard Features

| |
|-----------------------------|
| Horn |
| All motion alarm |
| Proportional control |
| Self-closing entry gate |
| Flashing amber beacon |
| Auto-leveling system |
| Emergency stop button |
| Over tilt protection system |
| Emergency descent system |
| On-board diagnostic system |
| Oscillating axle |
| 4.3" LED display |
| Load sensing system |
| Swing-out engine tray |
| Secondary Guarding System |

Accessories & Options

- ▶ Platform work light
- ▶ AC power to platform
- ▶ Air line to platform
- ▶ Engine heater
- ▶ Low-temperature hydraulic oil
- ▶ Synthetic biodegradable hydraulic oil
- ▶ Non-marking tire



HIGHLIGHTS

- ▶ Better work envelop performance, 10% larger than competitor
- ▶ Industry leading telematic control interface with self-diagnostic monitoring capability
- ▶ Smooth & stable boom extension control as low as 15mm/s(0.034mph)
- ▶ Dual lift capacity of 300kg(660-lb) unrestricted and 454kg (1,000-lb) restricted.



ACCESS WITH ZOOMLION GREEN

Phone: 0086(731)-88353680 0086(731)-88250971
E-mail: awm@zoomlion.com

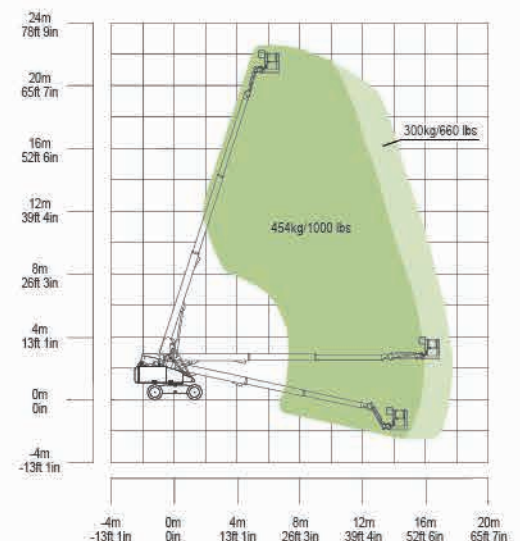
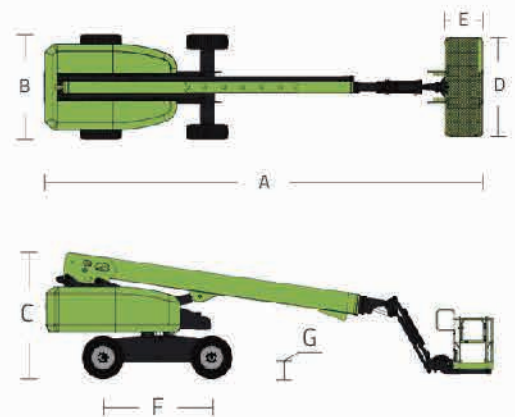
Add: ZOOMLION Wangcheng Industrial Park, Tengfei Road 997, Changsha, Hunan, China
Web: www.en.zoomlion.com

MAIN SPECS OF TELESCOPIC BOOM LIFTS

ZT20J

Comply with CE/ANSI/CSA Standard

| Model | ZT20J | |
|---|---|-----------|
| | Imperial | Metric |
| Size | | |
| Work Height | 74ft 7in | 22.75m |
| Platform Height | 68ft 1in | 20.75m |
| Horizontal Outreach | 57ft 1in | 17.4m |
| A - Stowed Length | 34ft | 10.36m |
| B - Stowed Width | 8ft 2in | 2.49m |
| C - Stowed Height | 9ft 1in | 2.78m |
| D - Platform Length | 8ft | 2.44m |
| E - Platform Width | 3ft | 0.91m |
| Jib Length | 5ft | 1.53m |
| F - Wheelbase | 8ft 3in | 2.52m |
| Tread | 8ft 2in | 2.49m |
| G - Ground Clearance | 1ft 5in | 0.42m |
| Performance | | |
| Platform Capacity (Unrestricted/Restricted) | 660/1000lb | 300/454kg |
| Drive Speed (Stowed) | 3.73mph | 6.0km/h |
| Gradeability | 45% (24°) | 45% (24°) |
| Turning Radius (Inside) | 7ft 10in | 2.4m |
| Turning Radius (Outside) | 17ft 9in | 5.4m |
| Turntable Swing | 360° continuous | |
| Platform Rotation | ±90° | |
| Tail Swing | 4ft 9in | 1.45m |
| Jib (Range of Articulation) | 135° (-60° ~ 75°) | |
| Max. Wind Speed | 28mph | 12.5m/s |
| Power | | |
| Engine | Kubota V2403 36.8kW/2700rpm Weichai WP3.2G50E317A 36.8kW/2500rpm | |
| Fuel Tank Capacity | 39.6 (us gal) | 150L |
| Control Voltage | 12V DC | |
| Hydraulic Tank Capacity | 39.6 (us gal) | 150L |
| Drive Mode | 4WD | |
| Steering Mode | Front-wheel | |
| Tire | | |
| Type | 355/55d-325-NM Non-marking Foam-filled Tires 355/55 D625 Foam-filled Tires 36x14-20 Solid Tires | |
| Weight | | |
| Gross | 26896lb | 12200kg |



Range of Motion ZT20J

ZOOMLION

NEW **ZT22JE ZT26JE** **ELECTRIC TELESCOPIC BOOM LIFT**

Comply with CE/ANSI/CSA Standard



Zero Emission
Low Noise



300/454kg
Dual Capacity



24°
Gradeability



4WD

HIGHLIGHTS

- ▶ Customized lithium-ion battery features green, environmental protection, lownoise and zero-emission, ideal for construction and plant maintenance.
- ▶ lithium-ion batteries combined with excellent energy management system provide longer running time.
- ▶ Low-temperature regenerative current control and power self-adaptive control effectively improve the safety of Li-ion battery and greatly prolong the batteries service life of at least 10%.
- ▶ Provide a variety of standard charging plugs and 10A/16A/32A multi-power optional charging mode featuring strong charging adaptability.
- ▶ Brand-new appearance with lightweight GFRP composite material hood and integrally formed coating features anti-corrosion, heat preservation, aging resistance and easy cleaning.
- ▶ Assembled large-opening component box, open-close hood, and a variety of reserved inspection hole easy to service.
- ▶ Accurate and efficient traveling AC drive system provides strong power and stable control. Gradeability reaches 45% and motor is maintenance-free for its lifetime.

FEATURES

Standard Features

Horn
Proportional control
All motion alarm
Flashing beacon
Self-closing entry gate

Emergency descent system
Emergency stop button
Secondary Guarding System
Auto-leveling system
On-board diagnostic system

Tilt protection system
Oscillating axle
Load sensing system
4.3' Led display
Swing-out engine tray

Accessories & Options

Platform work light
AC power to platform
Air line to platform

Low-temperature hydraulic oil
Synthetic biodegradable hydraulic oil
Non-marking tire

ACCESS WITH ZOOMLION GREEN

Phone: 0086(731)-88353680 0086(731)-88250971
E-mail: awm@zoomlion.com

Add: ZOOMLION Wangcheng Industrial Park, Tengfei Road 997, Changsha, Hunan, China
Web: www.en.zoomlion.com

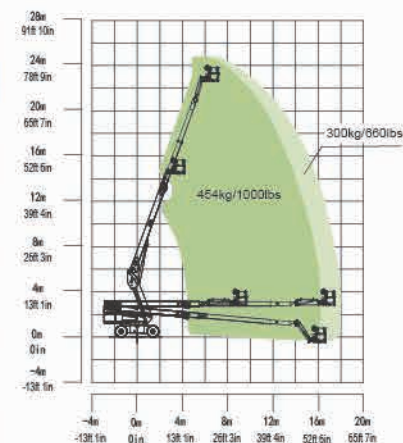
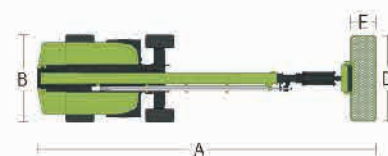
ELECTRIC TELESCOPIC BOOM LIFTS



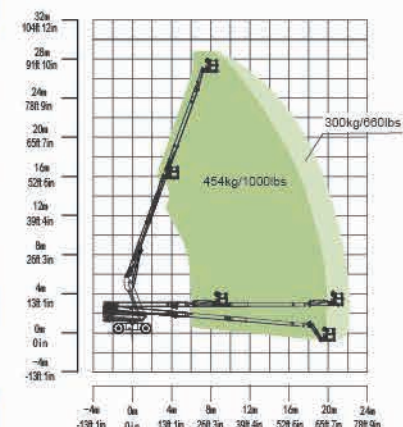
NEW ELECTRIC ZT22JE/ZT26JE

Comply with CE/ANSI/CSA Standard

| Model | ZT26JE | | ZT22JE | |
|---|---|------------|--|------------|
| Size | | | | |
| | Metric | Imperial | Metric | Imperial |
| Work Height | 28.70m | 94ft 2in | 24.40m | 80ft 1in |
| Platform Height | 26.70m | 87ft 7in | 22.40m | 73ft 6in |
| Horizontal Outreach | 22.1m | 82ft 6in | 17.9m | 58ft 9in |
| A - Stowed Length | 11.91m | 39ft 1in | 10.3m | 33ft 10in |
| B - Stowed Width | 2.49m | 8ft 2in | 2.49m | 8ft 2in |
| C - Stowed Height | 2.82m | 9ft 3in | 2.76m | 9ft 1in |
| D - Platform Length | 2.44m | 8ft | 2.44m | 8ft |
| E - Platform Width | 0.91m | 3ft | 0.91m | 3ft |
| Jib Length | 1.83m | 6ft | 1.83m | 6ft |
| F - Wheelbase | 2.80m | 9ft 2in | 2.52m | 8ft 3in |
| Tread | 2.49m | 6ft 11in | 2.49m | 6ft 12in |
| G - Ground Clearance | 0.41m | 1ft 4in | 0.41m | 1ft 4in |
| Performance | | | | |
| Platform Capacity (Unrestricted/Restricted) | 300/454kg | 660/1000lb | 300/454kg | 660/1000lb |
| Drive Speed (Stowed) | 5.5km/h | 3.42mph | 5.5km/h | 3.42mph |
| Gradeability | 45% (24°) | | 45% (24°) | |
| Turning Radius (Inside) | 3.11m | 10ft 2in | 2.72m | 8ft 11in |
| Turning Radius (Outside) | 6.16m | 20ft 3in | 5.58m | 18ft 4in |
| Turntable Swing | 360°continuous | | 360°continuous | |
| Platform Rotation | ±90° | | ±90° | |
| Tail Swing | 1.61m | 5ft 3in | 1.61m | 5ft 3in |
| Jib Rotation | 130° (- 55°~75°) | | 130° (- 55°~75°) | |
| Max. Wind Speed | 12.5m/s | 28mph | 12.5m/s | 28mph |
| Power | | | | |
| Battery | 80V | | 80V | |
| Charger | 5KW/80V | | 5KW/80V | |
| Drive Motor | 5.2KW | | 4.2KW | |
| Lifting Motor | 30KW | | 21KW | |
| Auxiliary Power | 12V DC | | 12V DC | |
| Hydraulic Tank | 120L | 32 US gal | 120L | 32 US gal |
| Tire | | | | |
| Type | 15-625 Foam-filled Tires 385/65-24 Solid Tires | | 355/55-24.5 Foam-filled Tires 355/55 D625 Solid Tires | |
| Weight | | | | |
| Gross | 17600kg | 39462lb | 13200kg | 29101lb |



Range of Motion ZT22JE



Range of Motion ZT26JE

ZOOMLION TELESCOPIC BOOM LIFTS

ZT26J

Comply with CE/ANSI/CSA Standard

HIGHLIGHTS



► Better work envelop performance, 10% larger than competitor

► Industry leading telematic control interface with self-diagnostic monitoring capability

FEATURES

Standard Features

| |
|-----------------------------|
| Horn |
| All motion alarm |
| Proportional control |
| Self-closing entry gate |
| Flashing amber beacon |
| Auto-leveling system |
| Emergency stop button |
| Over tilt protection system |
| Emergency descent system |
| On-board diagnostic system |
| Oscillating axle |
| 4.3' LED display |
| Load sensing system |
| Swing-out engine tray |
| Secondary Guarding System |

► Smooth & stable boom extension control as low as 15mm/s (0.034mph)

► Dual lift capacity of 300kg (660-lb) unrestricted and 454kg (1,000-lb) restricted.

Accessories & Options

- Platform work light
- AC power to platform
- Air line to platform
- Engine heater
- Low-temperature hydraulic oil
- Synthetic biodegradable hydraulic oil
- AC generator, 110V/50Hz or 220V/50Hz
- Non-marking tire



ACCESS WITH ZOOMLION GREEN

Phone: 0086(731)-88353680 0086(731)-88250971
E-mail: awm@zoomlion.com

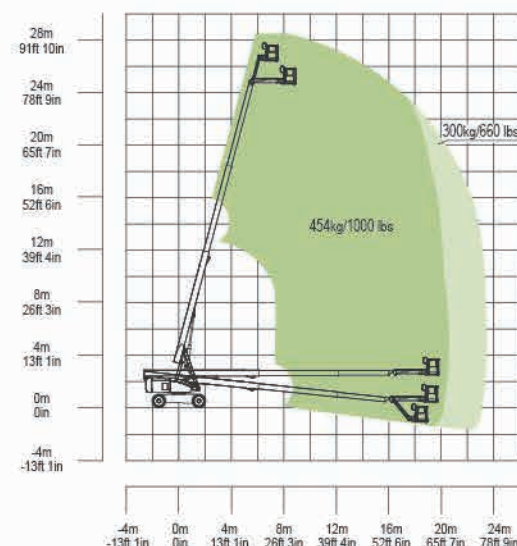
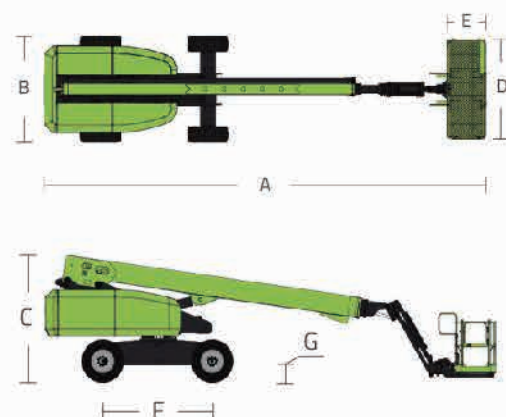
Add: ZOOMLION Wangcheng Industrial Park, Tengfei Road 997, Changsha, Hunan, China
Web: www.en.zoomlion.com

MAIN SPECS OF TELESCOPIC BOOM LIFTS

ZT26J

Comply with CE/ANSI/CSA Standard

| Model | ZT26J | |
|---|---|-----------|
| | Imperial | Metric |
| Size | | |
| Work Height | 92ft 6in | 28.20m |
| Platform Height | 85ft 11in | 26.20m |
| Horizontal Outreach | 76ft 6in | 23.31m |
| A - Stowed Length | 41ft | 12.50m |
| B - Stowed Width | 8ft 2in | 2.49m |
| C - Stowed Height | 9ft 2in | 2.80m |
| D - Platform Length | 8ft | 2.44m |
| E - Platform Width | 3ft | 0.91m |
| Jib Length | 6ft | 1.83m |
| F - Wheelbase | 10ft | 3.05m |
| Tread | 8ft 2in | 2.49m |
| G - Ground Clearance | 1ft 4in | 0.40m |
| Performance | | |
| Platform Capacity (Unrestricted/Restricted) | 660/1000lb | 300/454kg |
| Drive Speed (Stowed) | 3.42mph | 5.5km/h |
| Gradeability | 45% (24°) | 45% (24°) |
| Turning Radius (Inside) | 12ft | 3.66m |
| Turning Radius (Outside) | 22ft 6in | 6.86m |
| Turntable Swing | 360° continuous | |
| Platform Rotation | ±90° | |
| Tail Swing | 5ft 3in | 1.60m |
| Jib (Range of Articulation) | 130° (-55°~75°) | |
| Max. Wind Speed | 28mph | 12.5m/s |
| Power | | |
| Engine | Cummins QSF2.8 54kW/2400rpm Weichai WP2.3NG75E308 55.4kW/2600rpm Kubota V2607 55.4kW/2700rpm Deutz TD2.9 L4 50kW/2600rpm | |
| Fuel Tank Capacity | 39.6 (us gal) | 150L |
| Control Voltage | 12V DC | |
| Hydraulic Tank Capacity | 39.6 (us gal) | 150L |
| Drive Mode | 4WD | |
| Steering Mode | Front-wheel | |
| Tire | | |
| Type | 15-625 Foam-filled Tires 385/65-24 Solid Tires | |
| Weight | | |
| Gross | 41667lb | 18900kg |



Range of Motion ZT26J

ZOOMLION TELESCOPIC BOOM LIFTS

ZT30J

Comply with CE Standard



HIGHLIGHTS

- ▶ Rough terrain chassis features swing axle function, easy to achieve 45% gradeability
- ▶ Industry's first 30-meter product without bridge extending
- ▶ Smooth & stable boom extension, the telescopic efficiency of the boom is increased by 30% compared with that of the double-cylinder telescopic boom
- ▶ Smooth & stable boom extension technique controls the minimum stable extending speed at 0.015m/s (0.034mph)



FEATURES

Standard Features

| |
|-----------------------------|
| Horn |
| All motion alarm |
| Proportional control |
| Self-closing entry gate |
| Flashing amber beacon |
| Auto-leveling system |
| Emergency stop button |
| Over tilt protection system |
| Emergency descent system |
| On-board diagnostic system |
| Oscillating axle |
| 4.3" LED display |
| Load sensing system |
| Swing-out engine tray |
| Secondary Guarding System |

Accessories & Options

- ▶ Platform work light
- ▶ AC power to platform
- ▶ Air line to platform
- ▶ Engine heater
- ▶ Low-temperature hydraulic oil
- ▶ Synthetic biodegradable hydraulic oil
- ▶ AC generator, 110V/50Hz or 220V/50Hz
- ▶ Non-marking tire



ACCESS WITH ZOOMLION GREEN

Phone: 0086(731)-88353680 0086(731)-88250971
E-mail: awm@zoomlion.com

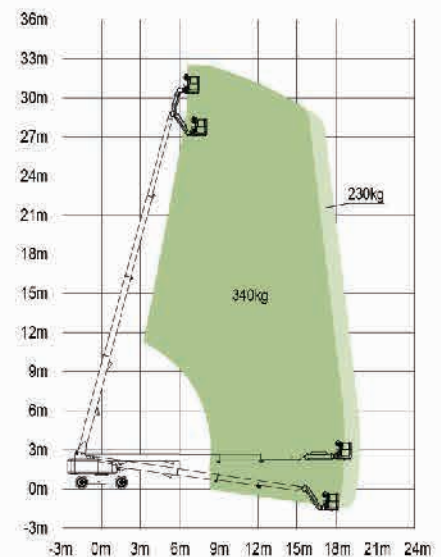
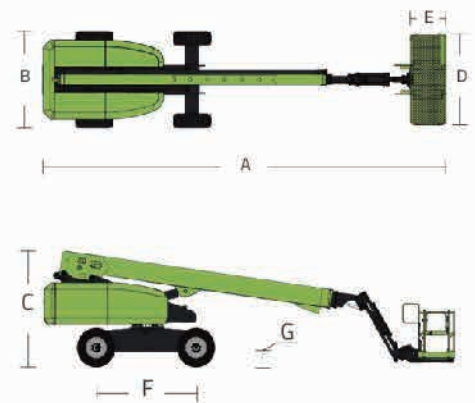
Add: ZOOMLION Wangcheng Industrial Park, Tengfei Road 997, Changsha, Hunan, China
Web: www.en.zoomlion.com

MAIN SPECS OF TELESCOPIC BOOM LIFTS

ZT30J

Comply with CE Standard

| Model | ZT30J | |
|---|---|-----------|
| | Imperial | Metric |
| Size | | |
| Work Height | 106ft 7in | 32.48m |
| Platform Height | 100ft | 30.48m |
| Horizontal Outreach | 64ft 11in | 19.78m |
| A - Stowed Length | 40ft 9in | 12.43m |
| B - Stowed Width | 8ft 2in | 2.49m |
| C - Stowed Height | 9ft 2in | 2.80m |
| D - Platform Length | 8ft | 2.44m |
| E - Platform Width | 3ft | 0.91m |
| Jib Length | 6ft | 1.83m |
| F - Wheelbase | 10ft | 3.05m |
| Tread | 8ft 2in | 2.49m |
| G - Ground Clearance | 1ft 4in | 0.40m |
| Performance | | |
| Platform Capacity (Unrestricted/Restricted) | 507/750lb | 230/340kg |
| Drive Speed (Stowed) | 3.42mph | 5.5km/h |
| Gradeability | 45% (24°) | |
| Turning Radius (Inside) | 12ft | 3.66m |
| Turning Radius (Outside) | 22ft 6in | 6.86m |
| Turntable Swing | 360° continuous | |
| Platform Rotation | ±90° | |
| Tail Swing | 4ft 10in | 1.47m |
| Jib (Range of Articulation) | 130° (-55°~75°) | |
| Max. Wind Speed | 28mph | 12.5m/s |
| Power | | |
| Engine | Cummins QSF2.8 54kW/2400rpm Weichai DHN2.3G0020 55.4kW/2600rpm | |
| Fuel Tank Capacity | 39.6 (us gal) | 150L |
| Control Voltage | 12V.DC | |
| Hydraulic Tank Capacity | 39.6 (us gal) | 150L |
| Drive Mode | 4WD | |
| Steering Mode | Front-wheel | |
| Tire | | |
| Type | 15-625 Foam-filled Tires 385/65-24 Solid Tires | |
| Weight | | |
| Gross | 42108lb | 19100kg |



Range of Motion ZT30J

ZOOMLION TELESCOPIC BOOM LIFTS

ZT34J

Comply with CE/ANSI/CSA Standard



HIGHLIGHTS

- ▶ Perform dual capacity design, up to 300/454kg (660/1000lb)
- ▶ Rough terrain chassis features swing axle function, easy to achieve 45% gradeability
- ▶ Creative outrigger telescopic method; strong field applicability, low telescopic failure rate, and effective prevention of abnormal tire wear(OPTION)
- ▶ Smooth & stable boom extension, the telescopic efficiency of the boom is increased by 30% compared with that of the double-cylinder telescopic boom
- ▶ Better work envelop performance, 10% larger than competitor

FEATURES

Standard Features

| |
|-----------------------------|
| Horn |
| All motion alarm |
| Proportional control |
| Self-closing entry gate |
| Flashing amber beacon |
| Auto-leveling system |
| Emergency stop button |
| Over tilt protection system |
| Emergency descent system |
| On-board diagnostic system |
| Oscillating axle |
| 4.3' LED display |
| Load sensing system |
| Swing-out engine tray |
| Secondary Guarding System |

Accessories & Options

- ▶ Platform work light
- ▶ AC power to platform
- ▶ Outrigger in-situ telescopic function
- ▶ Air line to platform
- ▶ Engine heater
- ▶ Low-temperature hydraulic oil
- ▶ Synthetic biodegradable hydraulic oil
- ▶ AC generator, 110V/50Hz or 220V/50Hz



ACCESS WITH ZOOMLION GREEN

Phone: 0086(731)-88353680 0086(731)-88250971
E-mail: awm@zoomlion.com

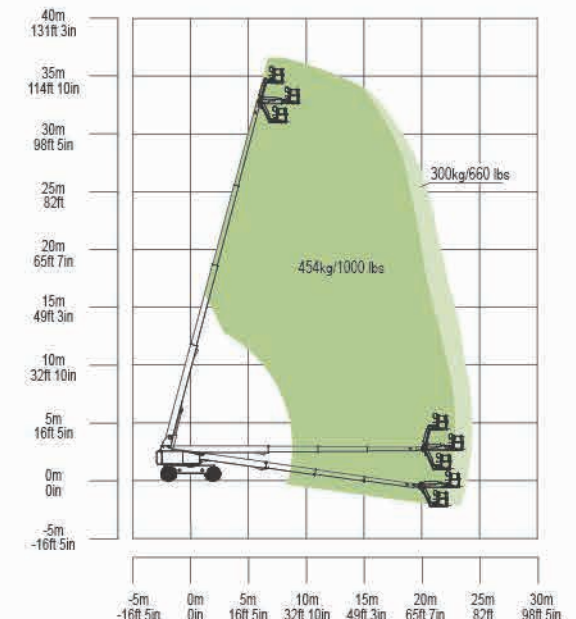
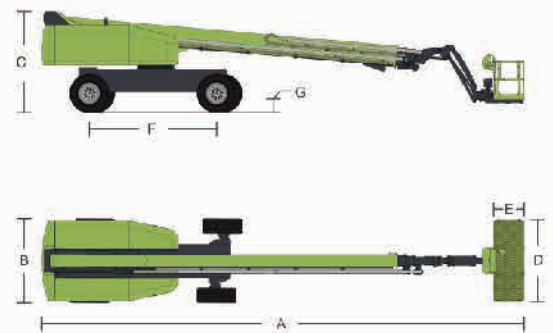
Add: ZOOMLION Wangcheng Industrial Park, Tengfei Road 997, Changsha, Hunan, China
Web: www.en.zoomlion.com

MAIN SPECS OF TELESCOPIC BOOM LIFTS

ZT34J

Comply with CE/ANSI/CSA Standard

| Model | ZT34J | |
|---|--------------------------------|------------|
| | Imperial | Metric |
| Size | | |
| Work Height | 118ft 1in | 36m |
| Platform Height | 111ft 7in | 34m |
| Horizontal Outreach | 79ft 5in | 24.2m |
| A - Stowed Length | 44ft 3in | 13.50m |
| B - Stowed Width | 8ft 2in | 2.49m |
| C - Stowed Height | 9ft 10in | 3m |
| D - Platform Length | 8ft | 2.44m |
| E - Platform Width | 3ft | 0.91m |
| Jib Length | 6ft | 1.83m |
| F - Wheelbase | 12ft 6in | 3.81m |
| Tread | 8ft 2in/12ft 8in | 2.49/3.87m |
| G - Ground Clearance | 1ft 4in | 0.41m |
| Performance | | |
| Platform Capacity (Unrestricted/Restricted) | 660/1000lb | 300/454kg |
| Drive Speed (Stowed) | 3.1mph | 5km/h |
| Gradeability | 45% (24°) | |
| Turning Radius (Inside) | 25ft 3in/10ft 10in | 7.7/3.3m |
| Turning Radius (Outside) | 35ft 5in/26ft 11in | 10.8/8.2m |
| Turntable Swing | 360° continuous | |
| Platform Rotation | ±90° | |
| Tail Swing | 3ft 11in | 1.2m |
| Jib (Range of Articulation) | 130° (-55°~75°) | |
| Max. Wind Speed | 28mph | 12.5m/s |
| Power | | |
| Engine | Cummins QSF2.8 54kW/2400rpm | |
| Fuel Tank Capacity | 52.8 (us gal) | 200L |
| Control Voltage | 12V DC | |
| Hydraulic Tank Capacity | 66 (us gal) | 250L |
| Drive Mode | 4WD | |
| Steering Mode | Four wheels/Front wheel/Crab | |
| Tire | | |
| Type | IN445/50D710 Foam-filled Tires | |
| Weight | | |
| Gross | 41888lb | 19000kg |



Range of Motion ZT34J

ZOOMLION TELESCOPIC BOOM LIFTS

ZT38J

Comply with CE/ANSI/CSA Standard



FEATURES

Standard Features

| |
|-----------------------------|
| Horn |
| All motion alarm |
| Proportional control |
| Self-closing entry gate |
| Flashing amber beacon |
| Auto-leveling system |
| Emergency stop button |
| Over tilt protection system |
| Emergency descent system |
| On-board diagnostic system |
| Oscillating axle |
| 4.3" LED display |
| Load sensing system |
| Swing-out engine tray |
| Secondary Guarding System |

Accessories & Options

- ▶ Platform work light
- ▶ AC power to platform
- ▶ Outrigger in-situ telescopic function
- ▶ Air line to platform
- ▶ Engine heater
- ▶ Low-temperature hydraulic oil
- ▶ Synthetic biodegradable hydraulic oil
- ▶ AC generator, 110V/50Hz or 220V/50Hz



HIGHLIGHTS

- ▶ Perform dual capacity design, up to 300/454kg (660/1000lb)
- ▶ Rough terrain chassis features swing axle function, easy to achieve 45% gradeability
- ▶ Creative outrigger telescopic method; strong field applicability, low telescopic failure rate, and effective prevention of abnormal tire wear(OPTION)
- ▶ Smooth & stable boom extension, the telescopic efficiency of the boom is increased by 30% compared with that of the double-cylinder telescopic boom
- ▶ Better work envelop performance, 10% larger than competitor



ACCESS WITH ZOOMLION GREEN

Phone: 0086(731)-88353680 0086(731)-88250971
E-mail: awm@zoomlion.com

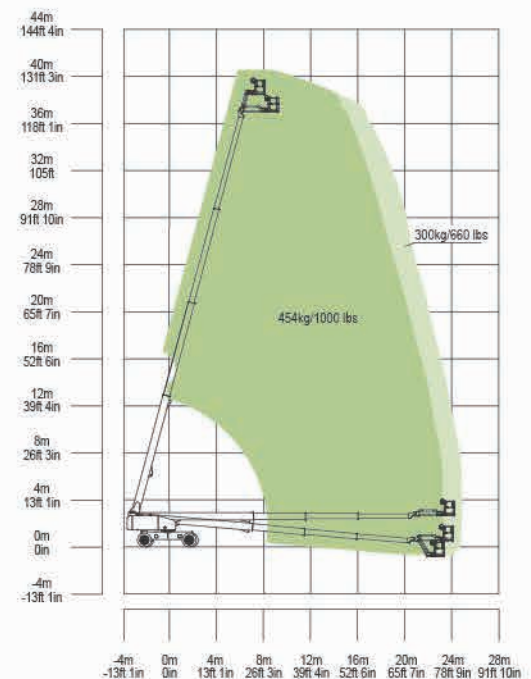
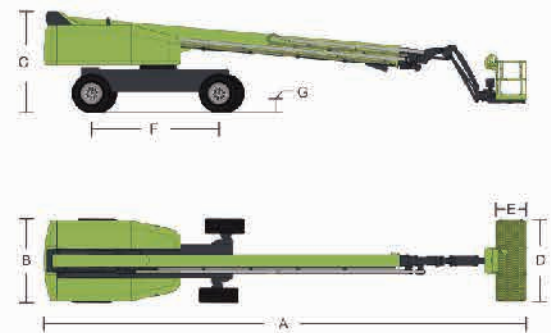
Add: ZOOMLION Wangcheng Industrial Park, Tengfei Road 997, Changsha, Hunan, China
Web: www.en.zoomlion.com

MAIN SPECS OF TELESCOPIC BOOM LIFTS

ZT38J

Comply with CE/ANSI/CSA Standard

| Model | ZT38J | |
|---|--------------------------------|------------|
| | Imperial | Metric |
| Size | | |
| Work Height | 131ft 11in | 40.2m |
| Platform Height | 125ft 4in | 38.2m |
| Horizontal Outreach | 82ft | 25m |
| A - Stowed Length | 40ft 4in | 12.3m |
| B - Stowed Width | 8ft 2in | 2.49m |
| C - Stowed Height | 9ft 10in | 3m |
| D - Platform Length | 8ft | 2.44m |
| E - Platform Width | 3ft | 0.91m |
| Jib Length | 5ft | 1.53m |
| F - Wheelbase | 12ft 6in | 3.81m |
| Tread | 8ft 2in/12ft 8in | 2.49/3.87m |
| G - Ground Clearance | 1ft 4in | 0.41m |
| Performance | | |
| Platform Capacity (Unrestricted/Restricted) | 660/1000lb | 300/454kg |
| Drive Speed (Stowed) | 3.1mph | 5km/h |
| Gradeability | 45% (24°) | |
| Turning Radius (Inside) | 25ft 3in/10ft 10in | 7.7/3.3m |
| Turning Radius (Outside) | 35ft 5in/6ft 11in | 10.8/8.2m |
| Turntable Swing | 360° continuous | |
| Platform Rotation | ±90° | |
| Tail Swing | 4ft 11in | 1.48m |
| Jib (Range of Articulation) | 135° (-60°~75°) | |
| Max. Wind Speed | 28mph | 12.5m/s |
| Power | | |
| Engine | Cummins QSF2.8 54kW/2400rpm | |
| Fuel Tank Capacity | 52.8 (us gal) | 200L |
| Control Voltage | 12V DC | |
| Hydraulic Tank Capacity | 66 (us gal) | 250L |
| Drive Mode | 4WD | |
| Steering Mode | Four wheels/Front wheel/Crab | |
| Tire | | |
| Type | IN445/50D710 Foam-filled Tires | |
| Weight | | |
| Gross | 45636lb | 20700kg |



Range of Motion ZT38J

ZOOMLION

TELESCOPIC BOOM LIFTS

ZT42J

Comply with CE Standard

FEATURES

Standard Features

| |
|----------------------------|
| Horn |
| Proportional control |
| All motion alarm |
| Flashing amber beacon |
| Self-closing entry gate |
| Emergency descent system |
| Emergency stop button |
| Auto-leveling system |
| On-board diagnostic system |
| Tilt protection system |
| Oscillating axle |
| Load sensing system |
| 4.3' LED display |
| Swing-out engine tray |
| Secondary Guarding System |

Accessories & Options

- ▶ Platform work lights
- ▶ AC power to platform
- ▶ Outrigger in-situ telescopic function
- ▶ Air line to platform
- ▶ Engine heater
- ▶ Low-temperature hydraulic oil
- ▶ Synthetic biodegradable hydraulic oil
- ▶ AC generator, 110V/50Hz or 220V/50Hz

HIGHLIGHTS

- ▶ Perform dual capacity design, up to 300/454kg (660/1000lb)
- ▶ Rough terrain chassis features swing axle function, easy to achieve 45% gradeability
- ▶ Creative outrigger telescopic method; strong field applicability, low telescopic failure rate, and effective prevention of abnormal tire wear(OPTION)
- ▶ Smooth & stable boom extension, the telescopic efficiency of the boom is increased by 30% compared with that of the double-cylinder telescopic boom
- ▶ Better work envelop performance, 10% larger than competitor
- ▶ R-shaped slider and U-shaped channel steel design at the bottom of the boom, effectively reducing the lateral deflection of the boom
- ▶ U-shaped boom design effectively reduces the weight of the boom and deflection, and provides better machine stability
- ▶ Jib rotary function provides larger working range and more flexible motion
- ▶ Swing-out engine tray



ACCESS WITH ZOOMLION GREEN

Phone: 0086(731)-88353680 0086(731)-88250971
E-mail: awm@zoomlion.com

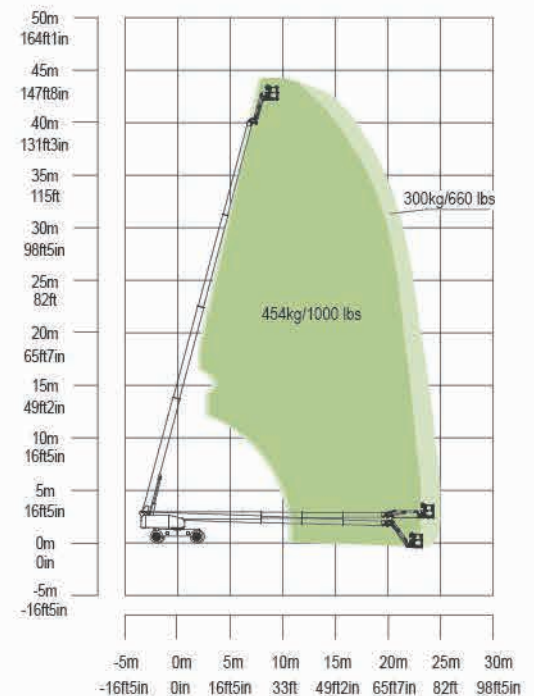
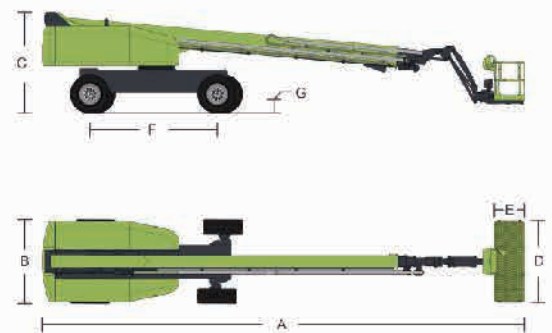
Add: ZOOMLION Wangcheng Industrial Park, Tengfei Road 997, Changsha, Hunan, China
Web: www.en.zoomlion.com

TELESCOPIC BOOM LIFTS

ZT42J

Comply with CE Standard

| Model | ZT42J | |
|---|---------------------------------|------------|
| | Imperial | Metric |
| Size | | |
| Work Height | 144ft 7in | 44.08m |
| Platform Height | 138ft 1in | 42.08m |
| Horizontal Outreach | 82ft | 25m |
| A - Stowed Length | 42ft 8in | 13m |
| B - Stowed Width | 8ft 2in | 2.49m |
| C - Stowed Height | 9ft 10in | 3m |
| D - Platform Length | 8ft | 2.44m |
| E - Platform Width | 3ft | 0.91m |
| Jib Length | 8ft | 2.44m |
| F - Wheelbase | 12ft 6in | 3.81m |
| Tread | 8ft 2in/12ft 8in | 2.49/3.87m |
| G - Ground Clearance | 1ft 4in | 0.41m |
| Performance | | |
| Platform Capacity (Unrestricted/Restricted) | 660/1000lb | 300/454kg |
| Drive Speed (Stowed) | 3.1mph | 5km/h |
| Gradeability | 45% (24°) | |
| Turning Radius (Inside) | 25ft 3in/10ft 10in | 7.7/3.3m |
| Turning Radius (Outside) | 35ft 5in/26ft 11in | 10.8/8.2m |
| Turntable Swing | 360° continuous | |
| Platform Rotation | ±90° | |
| Tail Swing | 5ft 6in | 1.68m |
| Jib (Range of Articulation) | 130° (-55°~75°) | |
| Max. Wind Speed | 28mph | 12.5m/s |
| Power | | |
| Engine | Cummins QSF2.8 54kW/2400rpm | |
| Fuel Tank Capacity | 52.8gal | 200L |
| Control Voltage | 12V.DC | |
| Hydraulic Tank Capacity | 66gal | 250L |
| Drive Mode | 4WD | |
| Steering Mode | Four wheels/Front wheel/Crab | |
| Tire | | |
| Type | IN445/50 D710 Foam-filled Tires | |
| Weight | | |
| Gross | 48281lb | 21900kg |



Range of Motion ZT42J

ZOOMLION

NEW ZT58J

TELESCOPIC BOOM LIFT

CE Certified

FEATURES

Standard Features

- ▶ Horn
- ▶ Proportional control
- ▶ All motion alarm
- ▶ Flashing beacon
- ▶ Self-closing entry gate
- ▶ Emergency descent system
- ▶ Emergency stop button
- ▶ Auto-leveling system
- ▶ On-board diagnostic system
- ▶ Tilt protection system
- ▶ Load sensing system
- ▶ 4.3' Led display
- ▶ Swing-out engine tray
- ▶ Anemograph

Accessories & Options

- ▶ Platform work light
- ▶ Anti-collision device

HIGHLIGHTS

- ▶ Work height up to 58.8m and horizontal outreach up to 25.5m
- ▶ Industry's first polygonal innovative boom, boom weight reduced by more than 10%, vertical stiffness increased by 25%, torsion resistance increased by 20%, and offers small deformation and stable control

ACCESS WITH ZOOMLION GREEN

Phone: 0086(731)-88353680 0086(731)-88250971
E-mail: awm@zoomlion.com

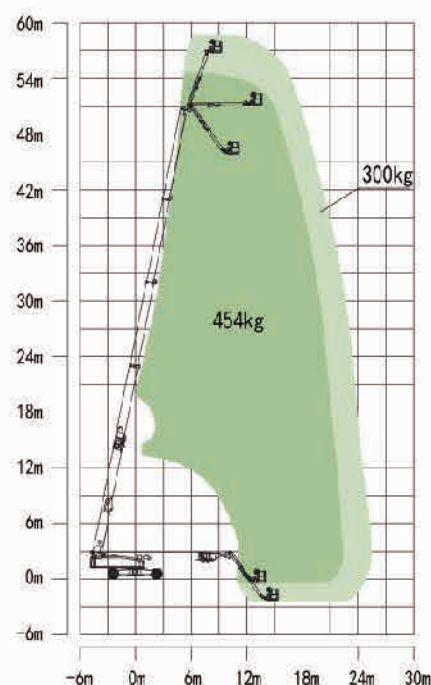
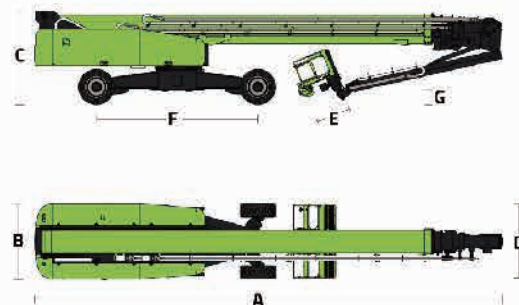
Add: ZOOMLION Wangcheng Industrial Park, Tengfei Road 997, Changsha, Hunan, China
Web: www.en.zoomlion.com

MAIN SPECS OF TELESCOPIC BOOM LIFT

ZT58J

Comply with CE Standard

| Model | ZT58J | |
|---|-------------------------------|--------------------|
| | Metric | Imperial |
| Size | | |
| Work Height | 58.8m | 192ft 11in |
| Platform Height | 56.8m | 186ft 4in |
| Horizontal Outreach | 25.5m | 83ft 8in |
| A - Stowed Length | 14.4m | 47ft 3in |
| B - Stowed Width | 2.5m | 8ft 2in |
| C - Stowed Height | 3.06m | 10ft |
| D - Platform Length | 2.44m | 8ft |
| E - Platform Width | 0.91m | 3ft |
| F - Wheelbase | 5.357/4.69m | 17ft 7in/15ft 5in |
| Tread | 2.5/5.15m | 8ft 2in/16ft 11in |
| G - Ground Clearance | 0.40m | 1ft 4in |
| Performance | | |
| Platform Capacity (Unrestricted/Restricted) | 300/454kg | 660/1000lb |
| Drive Speed (Stowed) | 4.5km/h | 2.8mph |
| Gradeability | 45%(24°) | |
| Turning Radius (Inside) | 6.79/2.57m | 22ft 3in/8ft 5in |
| Turning Radius (Outside) | 8.43/6.39m | 27ft 8in/20ft 12in |
| Turntable Swing | 360° non-continuous | |
| Platform Rotation | ±90° | |
| Tail Swing | 2.25m | 7ft 5in |
| Jib (Range of Articulation) | 125°(-55°~70°) | |
| Max. Wind Speed | 12.5m/s | 28mph |
| Power | | |
| Engine | Cummins QSF3.8 | |
| Fuel Tank Capacity | 200L | 52.8gal |
| Control Voltage | 12V DC | |
| Hydraulic Tank Capacity | 400L | 105gal |
| Drive Mode | 4WD | |
| Steering Mode | Four wheels/Front wheel/Crab | |
| Tire | | |
| Type | 445/50 D710 Foam-filled Tires | |
| Weight | | |
| Gross | 29600kg | 65256lb |



Range of Motion ZT58J

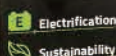
ZOOMLION

NEW ZX27AE SPIDER LIFT

HIGHLIGHTS

- ▶ 0.89m ultra-narrow width, quick-change work platform, easy access to compact spaces
 - ▶ Pure lithium-ion battery power features environmental protection and quiet operation
 - ▶ Accurate and efficient permanent magnet synchronous motor provides strong power and stable control
 - ▶ Non-marking rubber track suitable for all terrains
 - ▶ Central layout, great structural rigidity, and small boom deflection
 - ▶ Bus hydraulic valve control system offers stable and reliable movement
- Advanced energy management system supports synchronous power supply
- ▶ from external power supply, providing long-lasting battery life

CE Certified



FEATURES

Standard Features

- ▶ Proportional control
- ▶ All motion alarm
- ▶ Flashing beacon
- ▶ Self-closing entry gate
- ▶ Emergency descent system
- ▶ Emergency stop button
- ▶ Auto-leveling system
- ▶ On-board diagnostic system
- ▶ Auto-leveling outrigger
- ▶ Non-marking rubber track
- ▶ Load sensing system
- ▶ Color display
- ▶ Horn
- ▶ Hour meter
- ▶ Use while charging
- ▶ Wireless remote
- ▶ Proportional handle steering
- ▶ 60A Lithium-ion Battery Smart Charger
- ▶ Battery level display
- ▶ Low battery protection

Accessories & Options

- ▶ AC power to platform
- ▶ Air line to platform

ACCESS WITH ZOOMLION GREEN

Phone: 0086(731)-88353680/0086(731)-88250971
E-mail: awm@zoomlion.com

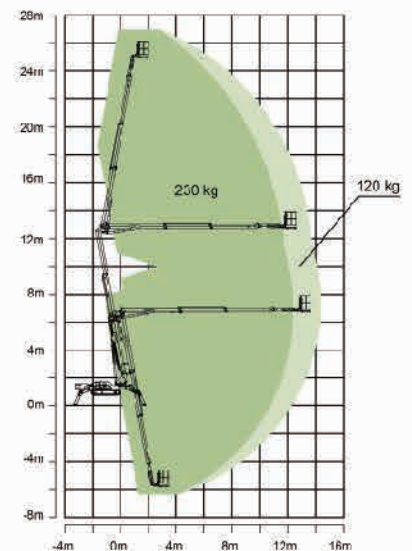
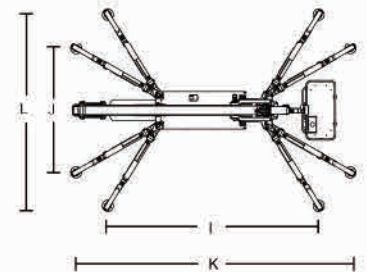
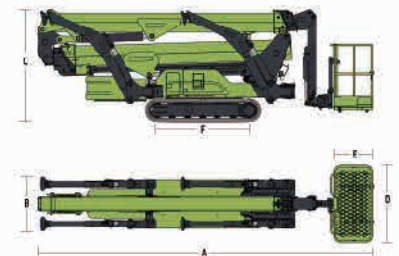
Add: ZOOMLION Wangcheng Industrial Park, Tengfei Road 997, Changsha, Hunan, China
Web: www.cn.zoomlion.com

MAIN SPECS OF TELESCOPIC BOOM LIFTS

ZX27AE

Comply with CE Standards

| Model | ZX27AE | |
|--|--|--|
| | Metric | Imperial |
| Size | | |
| Work Height | 27m | 88ft 7in |
| Platform Height | 25m | 82ft |
| Horizontal Outreach | 14.2m | 49ft 7in |
| Up and Over Height | 12.7m | 41ft 8in |
| Below Ground Reach | 5.8m | 19ft |
| A - Stowed Length (w/ platform) | 6.15m | 20ft 2in |
| D - Stowed Length (w/o platform) | 5.7m | 18ft 8in |
| B - Stowed Width | 0.89m | 2ft 11in |
| C - Stowed Height | 2.05m | 6ft 9in |
| E - Platform Length | 1.4m | 4ft 7in |
| F - Platform Width | 0.7m | 2ft 4in |
| G - Platform Height | 1.25m | 4ft 1in |
| H - Crawler Size (Length×Width) | 1.52m×0.25m | 4ft 11in × 10in |
| I - Max Length w/ Outrigger Extending (Standard) | 4.95m | 16ft 3in |
| J - Max Width w/ Outrigger Extending (Standard) | 4.48m | 14ft 8in |
| K - Max Length w/ Outrigger Extending (Narrow) | 6.45m | 21ft 2in |
| L - Max Width w/ Outrigger Extending (Narrow) | 2.88m | 9ft 5in |
| Outrigger Pad Size (Diameter) | 0.26m | 10ft |
| Approach Angle | 15° | |
| Depature Angle | 24° | |
| Performance | | |
| Platform Capacity | 230kg(restricted) 120kg(unrestricted) | 510lb (restricted) 265lb (unrestricted) |
| Drive Speed | 2km/h | |
| Gradeability | 16.7°/30% | |
| Allowable Tilting Angle When Driving | 10°/17% | |
| Turntable Swing | 400° non-continuous | |
| Platform Rotation | ±90° | |
| H-Tail Swing | 0m | |
| Max Leveling Angle | 16° | |
| Max Wind Speed | 12.5m/s | 27.96mph |
| Power | | |
| Battery | 315Ah 48V | |
| Charger | 48V/60A | |
| Drive Motor | Permanent magnet synchronous motor 48V | |
| Lift Motor | Permanent magnet synchronous motor 48V | |
| Auxiliary Power | Electric pump | |
| Hydraulic Tank Capacity | 50L | |
| Tire | | |
| Crawler type | K250×47×88 non-marking rubber crawler belt | |
| Weight | | |
| Gross weight | 4650kg | 10251 lb |
| Ground Pressure When Driving | 33.68kN/m² | |
| Ground Pressure When Working (Standard) | 2.05kN/m² | |
| Ground Pressure When Working (Narrow) | 2.45kN/m² | |
| Pressure on Single Outrigger When Working | 31.89KN | |



Range of Motion ZX27AE